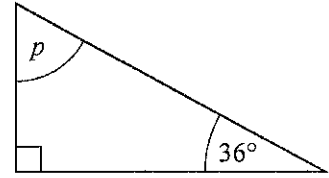


1. Work out the size of angle p.

90 + 36 = 126

180
126
054



Answer 54 degrees

(Total 2 Marks)

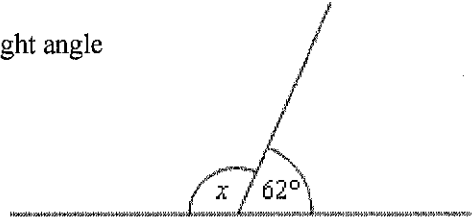
2. (a) Circle the word which best describes angle x.

acute alternate obtuse opposite reflex right angle

(1)

(b) Calculate the value of x.

180
62
118



Answer 118 degrees

(2)
(Total 3 Marks)

3. (a) Choose the word from this list which describes an angle of 97°.

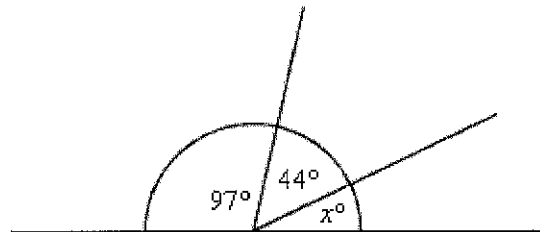
acute right angle obtuse reflex

Answer..... Obtuse

(1)

(b) Calculate the value of x.

97 + 44 = 141
180 - 141 = 39



Answer x = 39 degrees

(2)
(Total 3 marks)

4. (a) What types of angle are 78° and 144°?

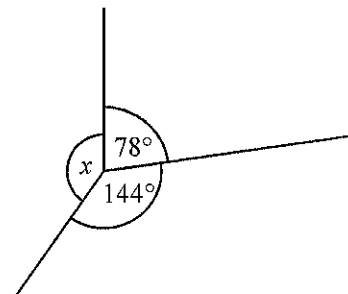
Answer: 78° is..... acute

144° is..... obtuse

(b) Work out the value of x.

144 + 78 = 222

360
222
138



Answer x = 138 degrees

(2)
(Total 4 marks)

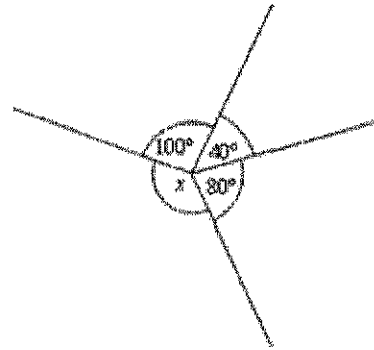
Angle Facts

5. Work out the size of angle x.

..... $100 + 40 + 80 = 220$

..... $360 - 220$

Answer 140° degrees



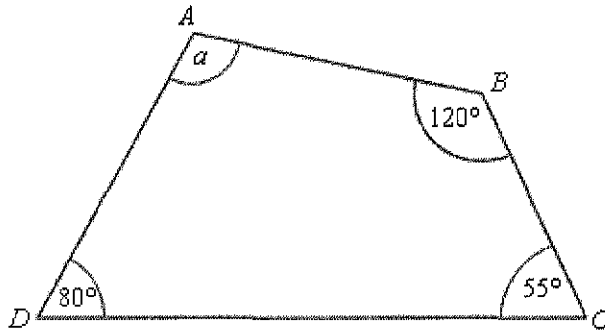
(Total 2 marks)

6. ABCD is a quadrilateral.

Work out the value of a.

360	120
255	55
105	80
	255

Answer 105° degrees



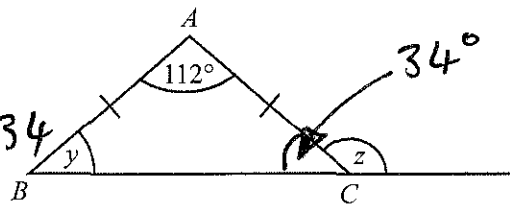
(Total 2 marks)

7. The diagram shows an isosceles triangle ABC.

(a) Calculate the size of angle y.

..... $180 - 112 = 68$ $68 \div 2 = 34$

Answer y = 34 degrees



(2)

(b) Calculate the size of angle z.

..... $180 - 34 = 146^\circ$

Answer z = 146° degrees

(1)

(Total 3 marks)

8. (a) ABC is an isosceles triangle with AB = BC

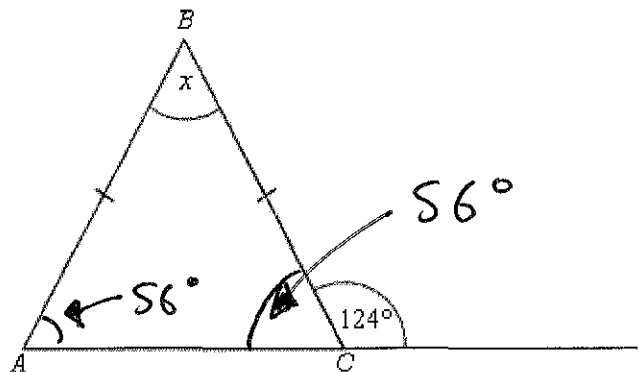
Calculate the size of the angle marked x.

..... $180 - 124 = 56^\circ$

..... $56 \times 2 = 112$

..... $180 - 112 = 68$

Answer 68° degrees



(Total 3 Marks)

Mark (Out of 19):

Comment: